

# MAUNGATAPERE SCHOOL



**Term 2**  
**27 June 2019**

*Ka whawhai tonu, ake, ake, ake!*

Kia ora Parents and Whanau

The term break begins at the end of next week 5 July. Hopefully this will help to break the current cycle of illness that many students and families are suffering from. Our students certainly need a bit of down time with families to recharge their batteries for next term. We hope everyone has a safe and enjoyable break.

Room 13 opens next Monday with Mrs Andrena Norrish and our recent New Entrant children, this room will take our 5 year old children for the remainder of the year.

Welcome to new students and their families, Gus Attwood and Jackson Hanger.

## PORTFOLIO REPORTS

Friday 5 July, students will be bringing home their portfolio reports. For those families new to our school, these include a full report based on the New Zealand Curriculum: the key competencies and all the curriculum areas. They also include some samples of work that have been completed during the first half of the year and some assessment tasks especially for maths basic facts. We hope this will give you a picture of what your child is able to achieve and the areas that they need to work on in their learning. Please take some time to share the report with your child so they can hear what their teacher is saying and also talk about their work.

## PARENT CONFERENCES

These will be Term 3 Week 3, 7/8 August, school will close at lunchtime on the 8 August. These will provide an opportunity for you to talk about the report and future goals with your children and their teacher. Interview time slots are 15 minutes each so there is time to clarify any questions relating to the report and your child's learning and behaviour. If you are not able to make those dates, there is the opportunity to make a time with the teacher that is convenient to you both. It is really important that families/whanau and school do connect, so we are on the same page regarding expectations for learning and behaviour. The support and learning expectations that our students receive from home definitely helps them to become successful confident, capable and connected learners who strive to fly high!

## VALLEY SPORTS DAY

Our Y5-8 students participated in a combined Valley Schools Sports event at the Mangakahia Recreation ground last Wednesday 19 June. The teams mixed students from across the participating schools – Kokopu, Poroti, Tangiteroria, Mangakahia, Maungatapere - and participated in a range of fun games and activities that required team work. It was a good opportunity to get to know other students also. Well done to Mr Yaron Overeem for his organisation and the teachers from each school for providing the activities. Everyone enjoyed the day.



## AGRICULTURE DAY ASSEMBLY

Next Wednesday 3 July at 9am, we will be holding a special assembly in the hall to talk to the students about Agriculture Day. An Agriculture Day information sheet went home yesterday. The assembly is a time to talk with the students about what they can do for Ag Day and especially about taking the opportunity to raise and care for a farm animal. There will be information about how to train your animal (calf, lamb, goat, chicken) and the requirements around growing a garden or other garden arts. While they may not be able to bring a calf on the day, they can still raise a calf and share their animal via a calf project board and video.

The assembly is also an opportunity for parents to come along and hear about how to care for an animal – particularly if they have not been involved before. If you do have any questions we are always happy to answer them at school or put you on to an expert who can help. There is a great team of supportive parents and community members who assist us with Ag Day.

We do operate a 'Lamby Day-care' for working families with young lambs or goats that need feeding during the day. The children can bring them to school and will get support from senior students to make sure they are fed correctly.

Agriculture Day is on Saturday 2 November and is part of our school year, so it is counted as a school day.

The focus for the day is on the students and their animals or gardens and garden art. It is a community day where extended family and whanau can come along and share in what the students have done. It is always great to see the relationship they have with their animals and the success they feel from showing them.

## MATHEX COMPETITION

Mathex is a maths problem solving competition where teams work together to solve up to 20 problems within half an hour. It involves running for the questions and taking the answers, with teams being able to pass if they are stuck. Teams are given points for each answer correct and the team with the most points at the end of the time wins. It is to be held tomorrow Friday 28 June at Whangarei Boys High School hall.

We have 4 teams competing this year and wish them luck in their problem solving:

**Y5 1.30pm** - Cloe Fox-Jerry, Mickey Tucker, Heidi Shepherd, Stella McConachie.

**Y6 2.30pm** - Ollie Kuindersma, Paige Karl, Che Nicolson, Tom Sweeney

**Y7 4pm** - Tokoaitua Owen, Kody George, Clara Fagan, Emma Caie

**Y8 5pm** - Asher Hovell, Keira Ripley, Luke Sweeney, Oliver Rippon.

## EMAIL

We have had a change of email programmes, please advise the office if you do not receive newsletters and other email comms.

***Nurturing confident, capable learners who strive to fly high.***

### SCHOOL COUNCIL EVENTS

The talent show final will be held next Tuesday 2 July at lunchtime. Juniors and seniors have been performing to get through to the final over the last 2 days. Wig Tuesday raised \$65 for Child Cancer and the Cake stall raised \$767 toward the fitness circuit upgrade. Thank you to those that supported these events, especially the cake stall.

### Y7/8 SCIENCE FAIR PROJECTS

These need to be completed and brought to school tomorrow. Students have been given time at school and as part of homework to complete their projects. They will be judged and those that meet the required criteria will be entered into the Northland Science Fair at Forum North next term. Students put a lot of time and effort into these projects and we will share them with the community during parent conference time next term.

### ASC

We have sent out a survey to after school care families. Please complete it by the end of next week so we can look at your feedback and endeavour to make improvements where we can. We are also working with our ASC team to do the same.

*We are looking for people to help at after school care again as unfortunately one of the team has had to leave. Hours are 3-4.30pm daily generally, though there are times when it is longer depending on numbers. Contact the office if you are interested.*

### SUPPORT STAFF PUMS/TEACHER SETTLEMENT

Over the next week our support staff will be attending meetings to discuss their agreement and also find out where they are at with the relativity project. This looks at the work and compares it to others with similar work levels and pay relativity. Support staff pay rates are low and the specialist work they do with our students does need to be recognised.

Teachers have voted to settle with the latest offer from the Ministry, so there will be no more disruption to school days with strikes. However, principals have voted not to accept their offer as there was no change. We are going back to the Ministry to try to change this, as the current settlement means teachers in small schools will be paid more than the principal. While parity has been reinstated for teachers it has not been for principals. Nor have any of the other issues been addressed. This is totally unsatisfactory for the profession – teachers and deputy principals being paid more than the principal of the school they work in!

Thank you to our school community for your support during this campaign. Please continue to voice your support for principals.

### TERM CALENDAR

|             |   |                              |
|-------------|---|------------------------------|
| Tues 2 July | - | Talent Show Finals           |
| Wed 3 July  | - | Ag Assembly at 9am           |
| Fri 5 July  | - | Portfolios Home /End of term |
| Mon 22 July | - | Start of Term 3              |
| Mon 29 July | - | PTA meeting                  |
| 7/8 August  | - | Parent/teacher conferences   |
| Thurs 8 Aug | - | Early Close                  |

### SCHOOL AWARDS

*Congratulations to the following pupils:*

**Lily Spratt R12-** *For being a fantastic role model in class.*

**Harley Hood R3** - *For making better choices and taking on learning challenges, keep it up!*

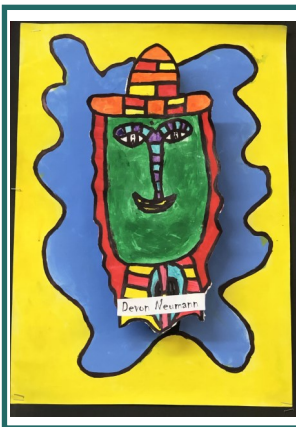
**Tyler Mills R9** - *For being helpful in class and having a positive attitude.*

**Liam Bell R12** - *For his diligent attitude towards his learning.*

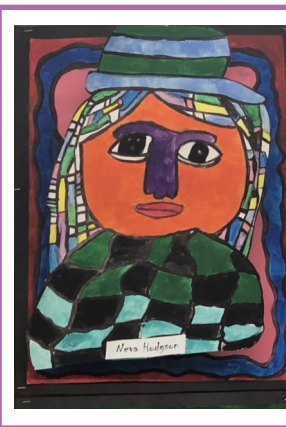
**Millie Taylor R5** - *For persevering and working hard to improve her reading and math.*

**Josh Turner R8** - *For being switched on to learning.*

## Room Four Self Portrait



Devon Neumann



Neva Hodgson



Leah Hall



Xander Tissink

Room 4 have been studying works by Friedensreich Hundertwasser, they then produced some amazing self portraits in his painting style.

### REMINDERS

#### **School Production**

Our costume team is led by our own very creative Leanne Kemp (Library support). **Leanne would like some helpers to assist with sewing either at school or at home. If you are able to help please contact the school office or talk with Leanne.**

#### **Netball**

A reminder that netball teams play the first Saturday of the term break but not the next 2 Saturdays. Netball starts again at the end of the first week of school.

#### **Lost Property**

Please check the lost property at school before the end of term. We will put it out along the front of R1 if the weather is fine so parents collecting children can check at the end of the day. There is always clothing left behind from after school sports practices.

It would be great if coaches/parents can remind everyone to take their gear home, rather than leaving it lying on the field!



# Please Support Those Who Support Us



## Kelly Sackfield

Taking care of real estate in Whangarei and surrounds

kelly.sackfield@raywhite.com 027 235 7906 09 945 4949

Licensee Salesperson: Goode Leith Realty Ltd. Licensed (REAA 2008)

rwwhangarei.co.nz

**RayWhite**



Web Design + Google Ads

Search Engine Ranking

Facebook Marketing



Google  
Partner

0800 627 546 energise.co.nz

## Ezra Bell CONSTRUCTION

New homes

Residential

Alterations

Commercial

17 Jackson Road

p. 09 434 8178 / m. 022 126 9804

e.ezra@ezrabellconstruction.com



ENGINEERING AND MECHANICAL SOLUTIONS

Fabrication/welding • Precision engineering • Portable line boring • Hydraulics • Design and build projects.

Neal Turner Ph 021 442 664

Hagan Taylor Ph 021 273 7664

www.ntengineering.co.nz

62 Rewa Rewa Road, Whangarei.

Ph 09 438 0828

info@ntengineering.co.nz

## Maunu Pharmacy Limited

See us for the  
best advice and  
better health



OPEN

Mon-Fri 8.30am-5.30pm

Sat 9.00am-1.00pm

115a Maunu Road, Manu Ph: 438 3553

## Maungatapere Transport Ltd



Your local carriers for over 50 years

Livestock, Metal & Fert Cartage, Hay, Silage/Maize harvesting, Portable Water Delivery, Postal Centre, General Hardware, Farm Merchandise, Stock Food, Hydralada Agents.

Office and Hardware Store located at

1151 SH 14, Maungatapere. (Cnr Otaika Valley Rd & SH 14)

PH. (09) 434 6722 / 434 6632

E. maungatapere@transport.co.nz

www.maungatapere@transport.co.nz



SERVICES: • Tyres • Balancing • Finance  
• Alignments • Alloy wheels • Mag wheel repairs  
• Batteries • Nitrogen • Punctures

Mention Maungatapere and for every tyre purchased through us we will give \$5 back to Maungatapere school.

Owners: Shane and Harena Fraser

Mobile: 027 426 2951

info@tyrepower.net.nz • www.tyrepower.co.nz

WHANGAREI

09 438 0992

WARKWORTH

09 283 3495

150 Cameron Street, Whangarei 2 Mill Lane, Warkworth

**MrRental**  
yes you can



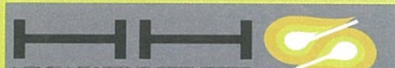
Short term or long term

We deliver, maintain and pick up for free

Fitness, whiteware, furniture, bedding

Entire Houselets and Homestaging

Call us on 0800 111 313 or visit mrrental.co.nz



Woodfire Installation & Reconditioning Specialist

- New Fires
- Installation & Repairs
- Reconditioning
- New Flue Kits & Parts
- Free Quotes (within City Limits)
- Chimney Sweeps

Ph: 438 5260 Cell: 027 273 0267

www.homeheating.co.nz



SIMON REID

0800 710 000

021 938 268 • 09 434 7777

reid.ltd@sjreid.co.nz • www.sjreid.co.nz

SH 14, Maungatapere • RD 10, Whangarei 0170

Supply and delivery of:

Bark | Bark Mulch | Peelings | Sawdust

Driveway Metal

Bulk delivery of Metal | Lime | Fertiliser

Subsidiary Companies

DIESEL and DIRT Landscape Supplies

Always Wet Water Deliveries

## BRYANT TRACTORS

Massey Ferguson • Fendt  
Goldoni • Iseki • TYM  
Farm Implements  
Spray Equipment  
Push Mowers  
Ride on Mowers



SALES • SERVICE • SPARES

PH: 438 1319



Your local  
electrician  
based in  
Maungatapere.

No job too small • Give us a call for any  
electrical needs; Rural, Domestic or Commercial

022 544 1238 or 09 393 1051

www.mcmillanelectrical.co.nz

mcmillanelectrical@outlook.com



09 438 4023

Mobile: 0274 958 391

office@johnsonrichards.co.nz

14 Porowini Avenue

Commercial &  
Residential  
Plumbing  
& Maintenance

New Builds & Renovations | Blocked Drains  
Water Filters | Pumps & Servicing | Roofing & Spouting  
Drainlaying | Emergency Plumbing

www.whangareiplumbers.co.nz

## Advance Dairy and Pump

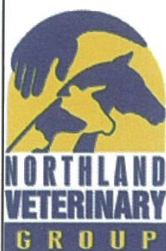


A DeLaval GRUNDFOS

- Milking systems
- Water pumps and reticulation
- Farm effluent systems

Whangarei  
(09) 438 7038

Dargaville  
(09) 439 8415



WHANGAREI

16-18 Maunu Rd

Open 7 Days

HIKURANGI

Cnr George & Parks St

ONERAHI

165 Onerahi Rd

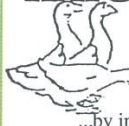
PHONE

09 470 1060

24 Hour Emergency Service

www.northvets.co.nz

## KAIGOOSE LIME



636 Otaika Valley Road

Combat Dry Summers

Bulk discounts available

...by increasing feed available...

Lime releases more nitrogen especially during  
Summer and Autumn

For further information regarding the properties of, or supply and price of  
Lime contact:

SALES | SERVICE | ORDERS

ph. Sandy or Glenys — 09 434 6761