

MAUNGATAPERE SCHOOL



Term 2
13 June 2019

Ka whawhai tonu, ake, ake, ake!

Kia ora Parents and Whanau

We are getting well through toward the end of term and there are some quite nasty bugs out there currently – particularly flu bugs. If your children are sick please keep them home – this is particularly important with the current measles situation, as flu like symptoms are the first signs. Below are the recommendations from the DHB if there is a measles case linked to the school. This will also have an effect on worksites, so it is good to be aware of your immunisation record as adults also.

Welcome to new students and their families - Conner Boylan, Liam and Lara Fitzpatrick and Lucas Wilson

NEW ENTRANT ROLL GROWTH

R13 will open as a new entrant classroom on Monday 1 July with Mrs Andrena Norrish taking the class. We are lucky to have Andrena, as she is an experienced junior school teacher and has worked in a variety of schools and recently been contracted to the Ministry of Education. Those students who will be part of the new room have received a letter. The new class will allow low numbers for our new children starting school, with the class growing as the children come in for the rest of the year.

Y5/6 TIRITIRI MATANGI VISITS

Thank you to the many parents that took students to Tiritiri Matangi Bird Sanctuary. It is an amazing experience with the level of bird song hitting you as you get off the ferry. Thursday was a lovely day and fortunately the damp weather on Friday did not restrict the experience. We are sure those parents who went along enjoyed the experience as much as the students. The feedback from the guides was very positive – they were impressed with the knowledge and behaviour of our students. They will now be able to build on this knowledge as part of their topic learning.



R3 & 12 KELLY TARLTON'S VISIT

Next Monday is the trip to Kelly Tarlton for R3 and R12. Information has gone home with a list of parents who are providing supervision at the aquarium. Please make sure you are at school by 7.45am for a roll check and quick debrief with buses leaving at 8am. It will be a great adventure for these classes but one they will really enjoy. The bus should be back about 4pm but we will keep parents informed via the school app if there are any changes. We really appreciate those parents coming along to supervise and make the trip possible.

WHANGAREI INTERSCHOOL SPORTS Y4-6/VALLEY SPORTS DAY

Unfortunately the weather meant the Y4-6 WPSSA day had to be cancelled and there is no alternative day available. However, our Y5-8 students will be participating in a Valley Schools sports day on Wednesday 19 June. This is a day of fun team activities at Mangakahia Complex with our local schools getting together. Teams will be mixed with students from all the schools combining. They will travel to and from the complex by bus. Students will need their food and drink for the day with suitable clothing – jacket etc.

NORTH FUELS

We have received our \$1000 of robotic equipment to support the new digital technology curriculum. Thanks again to North Fuels and those in our community that support our school. Remember any business that uses North Fuels can nominate a school to support – you do not have to have children at it.



BOT OUTGOING MEMBERS

Our new Board of Trustees will be meeting for the first time next Wednesday 19 June 7pm in the staffroom.

Our school would like to acknowledge the work of outgoing Board members Dean Adams and Tony King. They have been members of our school Board for over 3 terms with Dean taking on the role of chairperson in 2015, and Tony leading our property team in that time. We would like to thank both for their support of our school, especially during ERO visits and the development and implementation of property plans. They have also been leading the work we have been doing to try to solve the car park issue. We now have a report to take to the Ministry of Education to determine if a project can be developed under health and safety. Dean was very active in maintaining our rural school feel, being part of the Central Day committee and the organisation of Central Day leading in to the A&P show.

Thank you to both for the many hours of time and support they have put into ensuring our school is well resourced and staff are well supported.

SCHOOL PRODUCTION

Next term we will begin work on our school production – leading to our performances at the start of Term 4. While our students will be working on their specific items, we will have a team working on costumes. Our costume team is led by our own very creative Leanne Kemp (Library support). **Leanne is seeking helpers who can sew!! If this is you, please let your child's teacher know. This is a huge task and many hands, make light work!**

CPR/DEFIBRILLATOR TRAINING

Mr Steve Karl from St John's Ambulance and a parent is offering to provide information and an opportunity to learn about how to use a defibrillator and CPR for parents and others in our school community. This will be available between 2.30-3.30pm on Wednesday 19 June and Thursday 27 June in R14 and at the Office Café on 2 July between 8.15 and 9.15am. He will have information and displays for you to look at and mannequins to try your CPR on. This is a great learning opportunity, as you never know when an emergency happens. There are defibrillators in our community, at Mangakahia Complex and Maungatapere GAS both have been funded by the Mangakahia Lions Club.

Nurturing confident, capable learners who strive to fly high.

TERM CALENDAR

Mon 17 June -	R3/12 Kelly Tarlton's Visit
Wed 19 June -	Valley Schools sports day
Fri 5 July -	End of term
Mon 22 July -	Start of Term 3

SCHOOL AWARDS

Congratulations to the following pupils:

Isla Gibson R3 - For her growing confidence, participation in class and group activities.

Emily Jeffery R7 - For always having a great attitude and helping around the classroom.

Daniel Litchfield R9 - For his positive attitude to learning and being a great role model.

Samara Gillespie R10 - For her creative thinking in Math.

Jackson Leigh R11 - For working hard to extend his stories.

Louise Ferreira R1 - Wonderful progress in spelling and writing.

Toby Schimanski R6 - For his awesome sensibility, attitude and respect for his peers and teachers.

Mason Bennett R5 - Working diligently in class and always doing his best.

Hone Paieka R3 - For always having wonderful manners and a positive attitude towards his learning.

REMINDERS

Lost Property: We have a lot of lost property currently – especially tops, sweat shirts etc. Please check in the lost property area outside R1 if your children are missing clothing, shoes or even lunch boxes!

Measles in Northland Schools: Students in classes who have not been vaccinated may be asked to stay home for up to 2 weeks if someone has measles. NDHB are recommending vaccination, which is free from your GP. The information flyer from the NDHB has been emailed out and posted on the school Facebook page for your information. (Also see below)

COMMUNITY NOTICES

Whangarei Girls High School -Yr 9 Enrolment Intake for 2020

- Promotional Visit at school 25/07/2019 11am
- WGHS open night 7 Aug 5.30 -7pm WGHS Gym
- Enrolment interviews at school 27 Aug 9am
- Enrolment interviews at WGHS 26 Aug
- Orientation Day 15 Nov

Whangarei Boys High School

- Promotional visit at school 24 July, 9.0am
- Open evening at WBHS 12 Aug from 4.30pm
- Orientation Day 18 Nov 9.15 - 12.30
- Enrolment interviews at WBHS 21 and 22 Aug

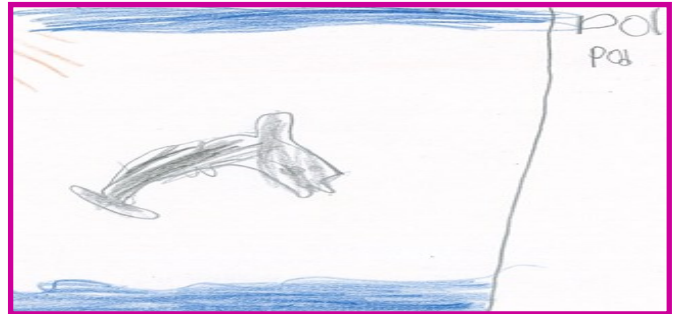
Wanted - 3 bedroom home with garage in the Maungatapere area, price guide mid 600's. Contact Neil Partridge 02102646119.

RUGBY LEAGUE TOURNAMENT

A group of league players participated in the Northland tournament at Tikipunga on Tuesday 11 June. They had a great day, not losing a game so well done to the team of:

Keelan O'Neill, Danyelle Komene, Jack Foden, Lewis Newton, Sienna Ripley, Dilan Brown, Joseph Parsons, Awanui Owen, Joe Taylor, Carter Iraia and Harry Turner. They were ably coached and managed by parents Hayley Taylor and Hamish Owen with support from parents for transport and encouragement.

Room Three Story Writing



A dolphin is a mammal. A dolphin has a strong tail. It has sharp teeth. A dolphin eats little fish. A dolphin lives in the ocean. They can do tricks, jumps and copy people. They sleep with one eye open to stay safe.

By Kassidy Taylor



Title: Seahorse

Classification: A seahorse is a fish.

Description: A seahorse has gills, a seahorse has a pouch.

Location: A seahorse lives in a coral reef.

Dynamics: A seahorse can camouflage to hide from predators.

By Kayden Brown

Measles in Northland schools

Please vaccinate your child or young person if they have not had one measles (MMR) vaccine. It is free at your general practice.

Students in a class with someone who has measles may be asked to stay home for up to two weeks, if they have had no MMR vaccinations.

Students with one or more MMR vaccinations can still attend school.

Check your child's immunisation records in their Well Child/Tamariki Ora book or ring your general practice.

www.northlanddhd.org.nz

Anyone believing they have been exposed to measles or exhibiting symptoms should not go to the ED or after hours' clinic or GP.

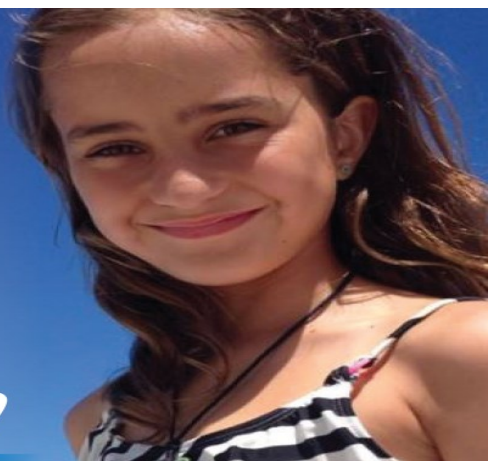
Instead call Healthline free on **0800 611 116** for advice and information from a trusted registered nurse, anytime, 24 hours a day, 7 days a week.

Symptoms:

cough, runny nose, fever, sore red eyes, then a rash.

NORTHLAND DISTRICT
HEALTH BOARD

Tu Pihiri Huarua A Rōhe O Te Tai Tokereau



Nurturing confident, capable learners who strive to fly high.

Please Support Those Who Support Us



Kelly Sackfield

Taking care of real estate in Whangarei and surrounds

kelly.sackfield@raywhite.com 027 235 7906 09 945 4949

Licensee Salesperson: Goode Leith Realty Ltd. Licensed (REAA 2008)

rwwhangarei.co.nz

RayWhite



Web Design + Google Ads

Search Engine Ranking

Facebook Marketing



Google
Partner

0800 627 546 energise.co.nz

Ezra Bell CONSTRUCTION

New homes

Residential

Alterations

Commercial

17 Jackson Road

p. 09 434 8178 / m. 022 126 9804

e.ezra@ezrabellconstruction.com



ENGINEERING AND MECHANICAL SOLUTIONS

Fabrication/welding • Precision engineering • Portable line boring • Hydraulics • Design and build projects.

Neal Turner Ph 021 442 664

Hagan Taylor Ph 021 273 7664

www.ntengineering.co.nz

62 Rewa Rewa Road, Whangarei.

Ph 09 438 0828

info@ntengineering.co.nz

Maunu Pharmacy Limited

See us for the
best advice and
better health



OPEN

Mon-Fri 8.30am-5.30pm

Sat 9.00am-1.00pm

115a Maunu Road, Manu Ph: 438 3553

Maungatapere Transport Ltd



Your local carriers for over 50 years

Livestock, Metal & Fert Cartage, Hay, Silage/Maize harvesting, Portable Water Delivery, Postal Centre, General Hardware, Farm Merchandise, Stock Food, Hydralada Agents.

Office and Hardware Store located at

1151 SH 14, Maungatapere. (Cnr Otaika Valley Rd & SH 14)

PH. (09) 434 6722 / 434 6632

E. maungatapere@transport.co.nz

www.maungatapere@transport.co.nz



SERVICES: • Tyres • Balancing • Finance
• Alignments • Alloy wheels • Mag wheel repairs
• Batteries • Nitrogen • Punctures

Mention Maungatapere and for every tyre purchased through us we will give \$5 back to Maungatapere school.

Owners: Shane and Harena Fraser

Mobile: 027 426 2951

info@tyrepower.net.nz • www.tyrepower.co.nz

WHANGAREI

09 438 0992

WARKWORTH

09 283 3495

150 Cameron Street, Whangarei 2 Mill Lane, Warkworth

MrRental
yes you can



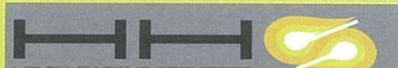
Short term or long term

We deliver, maintain and pick up for free

Fitness, whiteware, furniture, bedding

Entire Households and Homestaging

Call us on 0800 111 313 or visit mrrental.co.nz



Woodfire Installation & Reconditioning Specialist

- New Fires
- Installation & Repairs
- Reconditioning
- New Flue Kits & Parts
- Free Quotes (within City Limits)
- Chimney Sweeps

Ph: 438 5260 Cell: 027 273 0267

www.homeheating.co.nz



SIMON REID

0800 710 000

021 938 268 • 09 434 7777

reid.ltd@sjreid.co.nz • www.sjreid.co.nz

SH 14, Maungatapere • RD 10, Whangarei 0170

Supply and delivery of:

Bark | Bark Mulch | Peelings | Sawdust

Driveway Metal

Bulk delivery of Metal | Lime | Fertiliser

Subsidiary Companies

DIESEL and DIRT Landscape Supplies

Always Wet Water Deliveries

BRYANT TRACTORS

Massey Ferguson • Fendt
Goldoni • Iseki • TYM
Farm Implements
Spray Equipment
Push Mowers
Ride on Mowers



SALES • SERVICE • SPARES

PH: 438 1319



Your local
electrician
based in
Maungatapere.

No job too small • Give us a call for any
electrical needs; Rural, Domestic or Commercial

022 544 1238 or 09 393 1051

www.mcmillanelectrical.co.nz

mcmillanelectrical@outlook.com



09 438 4023

Mobile: 0274 958 391

office@johnsonrichards.co.nz

14 Porowini Avenue

Commercial &
Residential
Plumbing
& Maintenance

New Builds & Renovations | Blocked Drains
Water Filters | Pumps & Servicing | Roofing & Spouting
Drainlaying | Emergency Plumbing

www.whangareiplumbers.co.nz

Advance Dairy and Pump



DeLaval GRUNDFOS

- Milking systems
- Water pumps and reticulation
- Farm effluent systems

Whangarei
(09) 438 7038

Dargaville
(09) 439 8415



WHANGAREI

16-18 Maunu Rd

Open 7 Days

HIKURANGI

Cnr George & Parks St

ONERAHI

165 Onerahi Rd

PHONE

09 470 1060

24 Hour Emergency Service

www.northvets.co.nz

KAIGOOSE LIME



636 Otaika Valley Road

Combat Dry Summers

Bulk discounts available

...by increasing feed available...

Lime releases more nitrogen especially during
Summer and Autumn

For further information regarding the properties of, or supply and price of
Lime contact:

SALES | SERVICE | ORDERS

ph. Sandy or Glenys — 09 434 6761